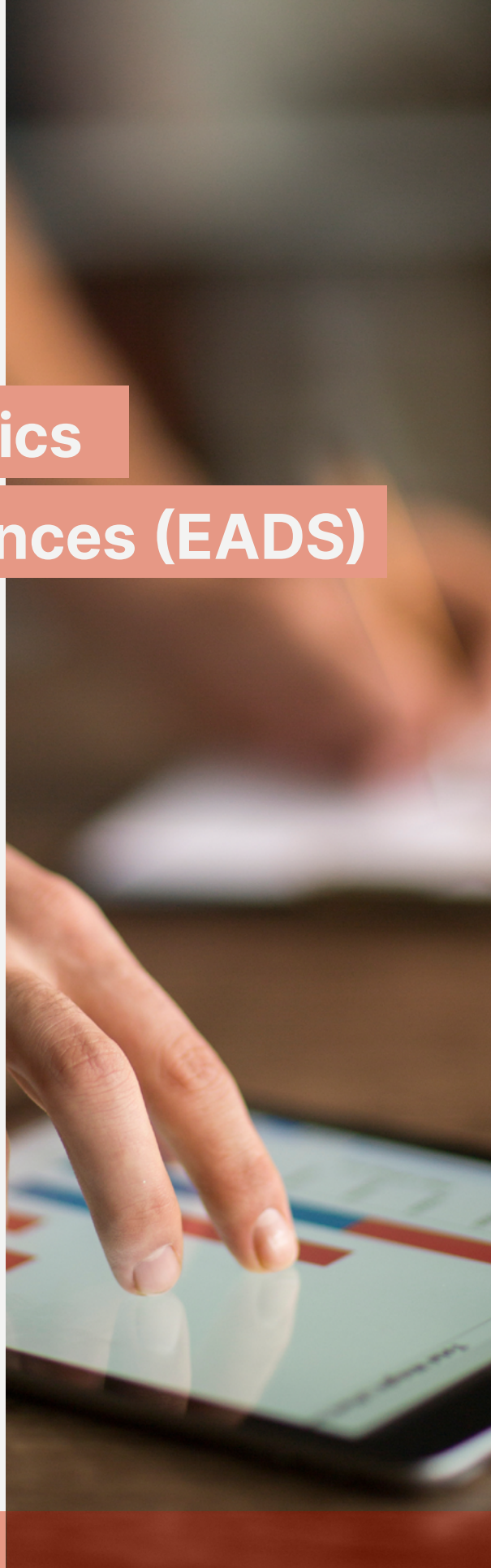


PhD Program in Economics, Analytics and Decision Sciences (EADS)

IMT SCHOOL FOR ADVANCED STUDIES LUCCA

Economics, Analytics and Decision Sciences (EADS) is an **international Ph.D. program** offered by the **IMT School**, one of the seven Schools of Excellence in Italy, which provides rigorous training and close supervision in **humanities, sciences, and technological disciplines**, welcoming multidisciplinary and interdisciplinary approaches at their boundaries. The IMT School is a truly **international environment** welcoming students and scholars from all around the world. The School has a record of placing students in top research universities, policy-making institutions, and companies. IMT School is a member of the EFC - Educating Future Citizens network: students and scholars have the opportunity to participate in joint activities and are encouraged to engage with partner institutions to foster academic and research collaborations. English is the official language of the School.



PhD Program in

Economics, Analytics and Decision Sciences (EADS)

EADS trains students to undertake cutting-edge research in a wide range of **economic and social disciplines** with a unique multidisciplinary approach that relies on the unifying language of **statistics and data science**, as well as on selected tools from **computer science and psychology**.

EADS students also have the opportunity to complete their research projects under joint supervision (double-degree) with partner universities, including **KU Leuven** and the **University of Alicante**. All students are encouraged to spend part of their studies abroad, both within the Erasmus+ framework and through ad hoc mobility agreements.

SCHOLARSHIPS AND FUNDING

All students enrolled in the PhD program receive a **scholarship** of about €1,350/month, which includes pension contributions and results in a net salary of about **€1,200/month for up to 4 years**. As an exclusive additional benefit, students are offered **free on-campus serviced housing and full board at the IMT canteen**, worth an equivalent of about €800/month. Furthermore, they are given a research budget of about €4,000 to attend international academic conferences, summer and winter schools, and other similar events. During visiting periods abroad, the scholarship is increased by 50%, possibly receiving further funds from the **Erasmus+ program**.



PhD Program in

Economics, Analytics and Decision Sciences (EADS)

CAMPUS LIFE

At the IMT School, a PhD isn't just about research - it's about **becoming part of a vibrant, international community in the heart of Tuscany**. Located within the stunning historical walls of Lucca, the IMT campus offers a unique blend of **academic excellence, personal growth, and everyday comfort**. One of the standout features of the IMT experience is the **dynamic campus life**. While PhD paths are often solitary, IMT transforms the journey into a **collaborative, enriching experience**. Workspaces and recreational areas are seamlessly integrated, encouraging students to connect, share ideas, and build lasting friendships.

All IMT students are guaranteed a **desk and have unrestricted access to the fully accessible campus**, thoughtfully designed to support both academic success and personal well-being. Modern amenities include cozy relaxation zones, coffee corners, kitchenettes equipped with cookers, microwaves, and dishwashers, as well as laundry rooms. When it's time to unwind, students can enjoy a dedicated Turkish bath, a fitness area, and a leisure room with ping pong, foosball, PlayStation consoles, and board games.

Student accommodations, located in the beautifully restored **San Francesco Complex** and the nearby **Brunero Paoli residence**, feature hotel-like shared double



rooms with private bathrooms. A campus **canteen** serves lunch and dinner daily, and **all students benefit from free housing and meals**.

The IMT School also offers outstanding academic facilities. With six spacious study rooms and 65 individual workstations reserved for students, students always have the space they need to work. The **IMT Library**, housed in the historic former **San Ponziano Church**, offers 32 exclusive study spots for IMT students, 86 additional seats for public use, and 24 private offices—four of which are bookable by students for deep, focused work.

At IMT School, students won't just study—they'll thrive in an environment designed to bring out their best, both professionally and personally.

PhD Program in

Economics, Analytics and Decision Sciences (EADS)

INPUT AND OUTPUT PROFILES

The EADS program is open to candidates from various fields, including **economics, management, statistics, law, physics, computer science, engineering, and related disciplines**.

The ideal candidate is interested in economics, analytics, and decision sciences, with strong quantitative skills, though prior experience in these areas is not required.

The program prepares students to tackle **complex problems in economics, social issues, and business**, aiming to **design sustainable solutions and effective policies**.

Graduates will specialize in economic decision-making and statistical analysis, with career opportunities in **academia, public administration, international organizations, research centers, and private companies**. Past graduates work in leading institutions, banks, and startups, focusing on quantitative problem-solving.



PhD Program in

Economics, Analytics and Decision Sciences (EADS)

PROGRAM OVERVIEW

The EADS PhD program is structured as follows:

In the first year, students take **core courses in economics, analytics, and decision sciences**, along with elective advanced courses tailored to their research interests. They also engage in laboratory activities on **coding, empirical evidence collection, and data analysis**, as well as long seminars led by external faculty members. Refresher courses in economics and quantitative methods are offered online before the program begins.

From years 2 to 4, students focus on their research under the guidance of faculty from one of the **research units**. They are expected to present their research projects in the second year. There is also the opportunity for joint supervision with partner universities such as KU Leuven and the University of Alicante. Students are encouraged to spend part of their studies abroad through **Erasmus+** and other mobility agreements.

The program features regular seminars by leading researchers and active reading groups where students can present their work and discuss research ideas.

